

- > Interchangeable operating heads reduces inventory costs
- > Conforms to Category 3 of the Machine Directive EN 954-1
- > Highly expandable with the use of the RMQ-Titan adapter
- > Operating heads can be attached in four directions, allowing for many mounting options



Start

Select Body

Plastic Base Unit with Rounded Plunger

Standard Auxiliary Contacts ①		Schematic	Travel Diagram	Terminal Type	Enclosure Material	Enclosure Color	Catalog Number	Price
NO	NC ⊖							
Base Unit with Standard Contacts								
0	2			Screw Terminals	Insulated Plastic	Yellow	LS-S02	60
						Black	LS-S02-SW	60
1	1			Screw Terminals	Insulated Plastic ②	Yellow	LS-S11	60
						Black	LS-S11-SW	60
1E	1L			Screw Terminals	Insulated Plastic	Yellow	LS-S11D	65
			Black			LS-S11D-SW	65	
				Screw Terminals	Insulated Plastic	Yellow	LS-S11DA	65
2	0			Screw Terminals	Insulated Plastic	Yellow	LS-S20	60
			Black			LS-S20-SW	60	
				Screw Terminals	Insulated Plastic	Yellow	LS-S20A	60
Base Unit with Snap-Action Contacts								
1	1			Screw Terminals	Insulated Plastic ②	Yellow	LS-S11S	60
						Black	LS-S11S-SW	60

Ordering Instructions



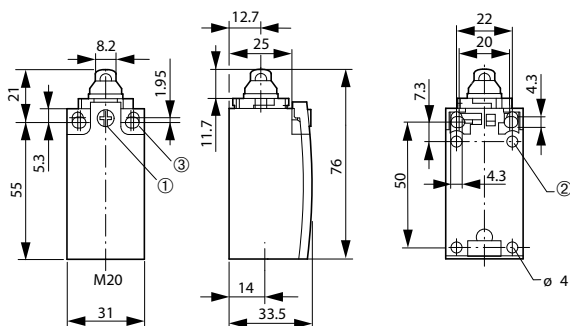
- 1 Locate the desired limit switch base unit.
- 2 Select operating head on next page (if desired).

- ① ⊖ = Positively driven contact
E = Early Make
L = Late Break
- ② EN 50047 Form B

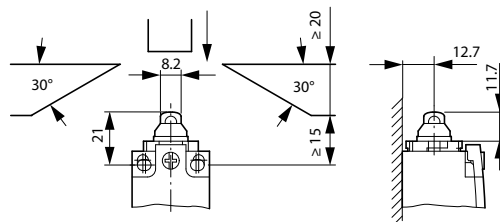
Limit Switch Body

LS-...; LSM-...; LSE-...

Dimensions are in millimeters.
Not intended for manufacturing purposes.

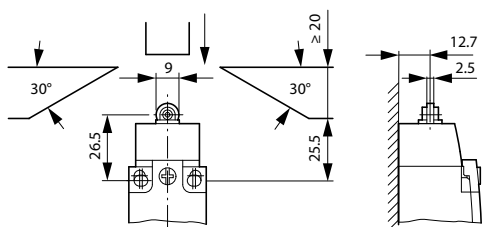


- ① Tightening torque of cover screws: 0.8 Nm \pm 0.2 Nm
- ② Only with LS (insulated version)
- ③ Fixing screws 2 x M4 \geq 30; $M_A = 1.5$ Nm



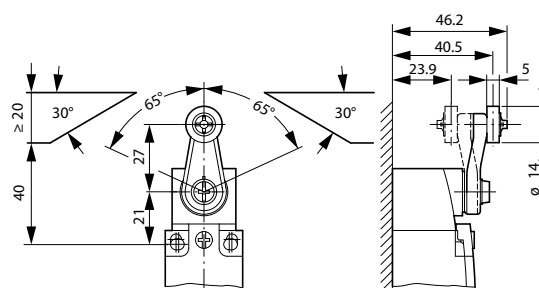
Operating Heads

LS-XP; LSM-XP



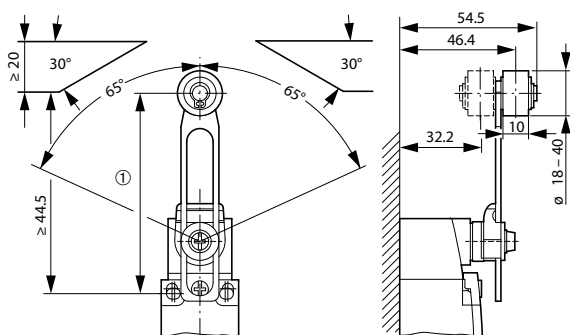
Operating Heads

LS-XRL; LSM-XRL



Operating Heads

LS-XRLA; LSM-XRLA



- ① Setting range of 54.5 to 97

Operating Heads

LS-XS; LSM-XS

