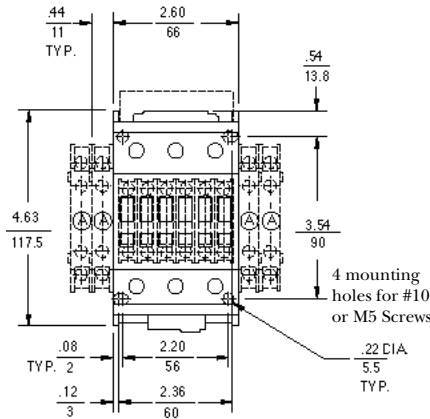


3-Pole Contactors 30-50 HP (460V) 48-68 FLA

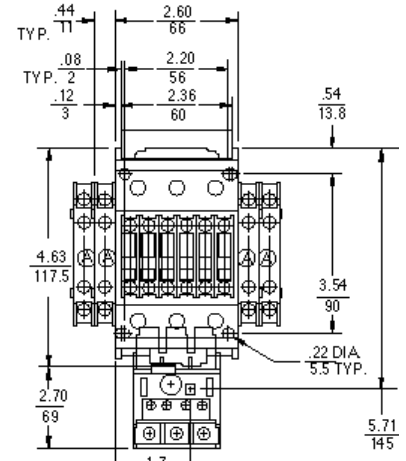
Legend and Notes for Illustration

- Ⓐ Extra Auxiliary Contacts, Side Mounted (if used)
- Ⓑ Extra Auxiliary Contacts, Front Mounted (if used)
- Ⓒ Pneumatic Timer (if used)
- Ⓓ Mechanical Latch (if used)
- Ⓔ Transient Voltage Suppressor

Add ½ inch for electrical clearance to enclosure.



Contactor - Front View



Starter - Front View

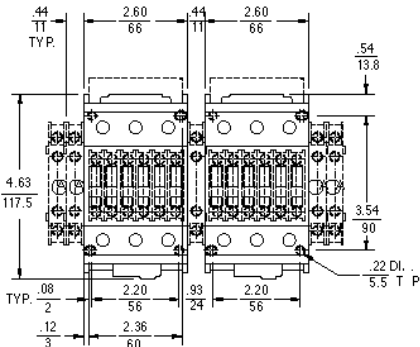
Engineering Outline Drawings

AC

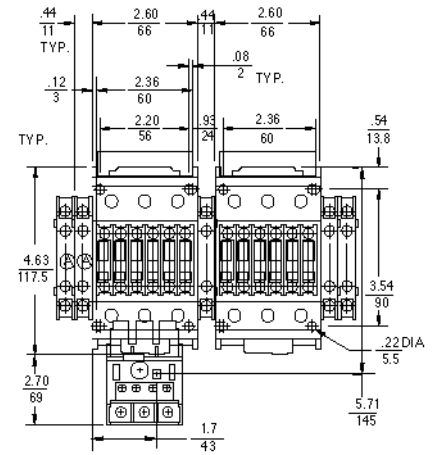
Contactor	55-215784
Starter	55-215828
Reversing Contactor	55-215794
Reversing Starter	55-215795

AC/DC Electronic

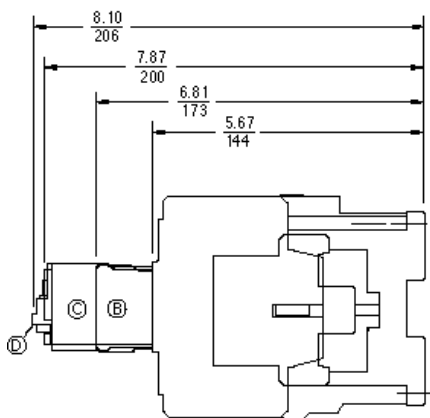
Contactor	55-216213
Starter	55-216209
Reversing Contactor	55-216212
Reversing Starter	55-216216



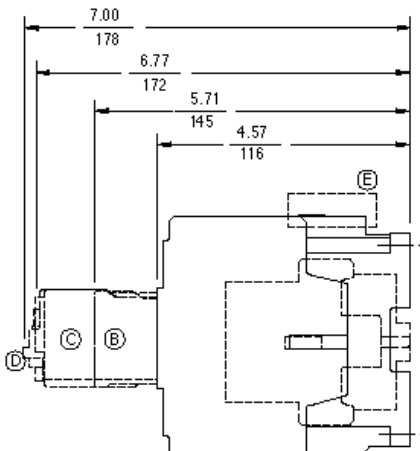
Reversing Contactor - Front View



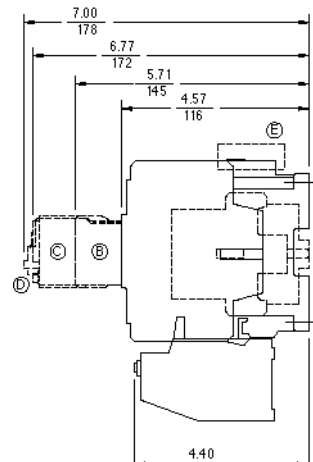
Reversing Starter - Front View



AC/DC Contactor - Side View



AC Contactor - Side View



AC Starter - Side View