



BG06 A-BG12 A



BF09 A-BF25 A



BF26 A-BF38 A



BF50-BF110



B115-B180



B250-B400

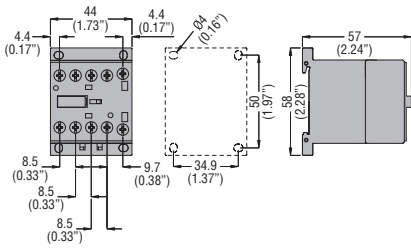
Three-phase motor control in AC3 duty												UL/CSA details						
Order code	IEC operating current Ith (AC1)				Maximum IEC power at ≤55°C (AC3)								Maximum UL/CSA horsepower ratings					
	≤40°C			≤55°C	≤70°C	le (AC3) ≤440V at ≤55°C		230V	400V	415V	440V	500V	690V	1000V	Single phase		Three phase	
AC coil	≤40°C	≤55°C	≤70°C	≤440V at ≤55°C	230V	400V	415V	440V	500V	690V	1000V	120V	240V	200V	240V	480V	600V	
[A]	[A]	[A]	[A]	[A]	[kW]	[kW]	[kW]	[kW]	[kW]	[kW]	[kW]	[HP]	[HP]	[HP]	[HP]	[HP]	[HP]	
11 BG06 01 Aⓐ	16	14	12	6	1.5	2.2	2.4	2.5	3	3	—	1/3	1	1 1/2	2	3	3	
11 BG06 10 Aⓐ			(≤60°C)															
11 BG09 01 Aⓐ	20	18	15	9	2.2	4	4.3	4.5	5	5	—	1/2	1 1/2	2	3	5	5	
11 BG09 10 Aⓐ			(≤60°C)															
11 BGF09 01 Aⓐ	20	18	15	9	2.2	4	4.3	4.5	5	5	—	1/2	1 1/2	2	3	5	5	
11 BGF09 10 Aⓐ			(≤60°C)															
11 BGP09 01 Aⓐ	20	18	15	9	2.2	4	4.3	4.5	5	5	—	1/2	1 1/2	2	3	5	5	
11 BGP09 10 Aⓐ			(≤60°C)															
11 BG12 01 Aⓐⓑ	20	18	15	12	3.2	5.7	6.2	5.5	5	5	—	1/2	1 1/2	3	3	7 1/2	10	
11 BG12 10 Aⓐⓑ			(≤60°C)															
BF09 01 Aⓐⓑ	25	20	18	9	2.2	4.2	4.5	4.8	5.5	7.5	—	3/4	2	3	3	5	7 1/2	
BF09 10 Aⓐⓑ																		
BF12 01 Aⓐⓑ	28	23	20	12	3.2	5.7	6.2	6.2	7.5	10	—	1	2	5	5	7 1/2	10	
BF12 10 Aⓐⓑ																		
BF18 01 Aⓐⓑ	32	26	23	18	4	7.5	9	9	10	10	—	1	3	5	5	10	15	
BF18 10 Aⓐⓑ																		
BF25 01 Aⓐ	32	26	23	25	7	12.5	13.4	13.4	15	11	—	2	3	7 1/2	7 1/2	15	15	
BF25 10 Aⓐ																		
BF26 00 Aⓐⓑ	45	36	32	26	7.3	13	14	14	15.6	18.5	—	2	5	7 1/2	7 1/2	15	20	
BF32 00 Aⓐⓑ	56	45	40	32	8.8	16	17	17	20	22	—	3	7 1/2	10	10	20	25	
BF38 00 Aⓐ	56 (60)	45 (48)	40 (42)	38	11	18.5	18.5	18.5	20	22	—	3	7 1/2	10	15	30	30	
11 BF50 00ⓐⓑ	90	80	65	50	14.3	25	27.2	27.2	33.2	43.5	25	5	10	10	15	30	40	
11 BF65 00ⓐⓑ	110	90	70	65	18.5	33	36	36	45.3	59.7	30	—	—	20	25	50	60	
11 BF80 00ⓐ	125	100	80	80	23	41	46	46	56	74	37	—	—	25	30	60	75	
11 BF95 00ⓐ	125	100	80	95	27.6	50	55	55	56	74	45	—	—	30	30	60	75	
11 BF110 00ⓐ	125	100	80	110	33	61	66	70	59	80	45	—	—	30	40	75	100	
11 B115 00ⓐⓑ	160	150	110	110	33	61	66	70	80	100	63	—	—	30	40	75	100	
11 B145 00ⓐⓑ	250	235	190	150	46	80	88	93	100	120	75	—	—	50	50	100	125	
11 B180 00ⓐⓑ	275	250	200	185	57	100	108	115	123	144	103	—	—	60	75	150	150	
11 B250 00ⓐⓑ	350	300	250	265	83	140	155	164	176	212	156	—	—	75	100	200	250	
11 B310 00ⓐⓑ	450	370	300	320	100	170	188	200	213	256	180	—	—	100	125	250	300	
11 B400 00ⓐⓑ	550	430	360	420	130	225	247	263	271	352	208	—	—	125	150	350	400	
11 B500 00ⓐⓑ	700	550	500	520	156	290	306	328	367	416	312	—	—	150	200	400	450	
11 B630 00ⓐⓑ	800	640	540	630	198	335	368	368	368	440	368	—	—	200	250	500	500	
11 B630 1000 00ⓐⓑ	1000	850	700	—	For AC1/Resistive duty only, see page 2-8.							—	—	—	—	—	—	—
11 B1250 24ⓐⓑ	1250	1050	880	—	For AC1/Resistive duty only, see page 2-8.							No UL	—	—	—	—	—	—
11 B1600 24ⓐⓑ	1600	1360	1120	—	For AC1/Resistive duty only, see page 2-8.							No UL	—	—	—	—	—	—

- ① Complete order code with coil voltage digit or with voltage digit followed by 60 (if 60Hz). Standard voltages are as follows:
  - AC 50/60Hz 024 / 048 / 110 / 230 / 400V
  - AC 60Hz 024 60 / 048 60 / 120 60 / 220 60 / 230 60 / 460 60 / 575 60 (V).
 Example: 11 BG06 10 A230 for mini-contactor BG06, three poles, with one NO contact and 230VAC 50/60Hz coil.  
 11 BG06 10 A460 60 for mini-contactor BG06 with one NO contact and 460VAC 60Hz coil.
- ② The coil of the contactor can be powered indifferently in AC or DC. Complete the order code only with the digit of the coil voltage. Standard voltages are:
  - AC/DC 24 / 48 / 60 / 110-125 (indicate 110) / 220-240 (indicate 220) / 380-415 (indicate 380) / 440-480V (indicate 440).
 Example: 11 B145 00 110 for contactor B145, three poles, without auxiliary contacts and with 110-125VAC/DC coil.  
 The 24VAC/DC voltage is not possible for B500-B630 1000 contactors.  
 Other voltages available on request.
- ③ If predisposed for mechanical latch (G495), the order code becomes 11 B...SL.00 ②  
 If already fitted with mechanical latch (G495), the order code becomes 11 B...L.00 ② ④.

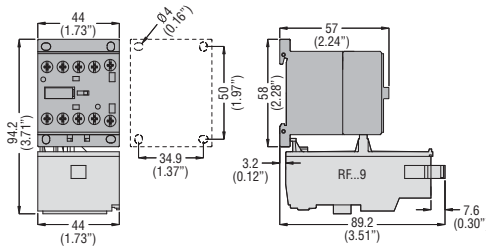
- ④ Indicate rated voltage of the mechanical latch, preceded by the letter C if in DC. Available voltages are:
  - AC 50/60Hz 48 / 110-125 indicate 110 / 220-240 indicate 220 / 380-415V indicate 380
  - DC 48 / 110-125 indicate 110 / 220-240V indicate 220.
 Example: 11 B145L 00 110 220 for contactor B145 without auxiliary contacts, with 110-125VAC/DC coil and mechanical latch powered at 220-240VAC.
- ⑤ G495 mechanical latch cannot be mounted.
- ⑥ Complete the order code with the digit of the coil voltage. For 110-125VAC (50/60Hz) indicate 110 or 220-240VAC (50/60Hz) indicate 220.  
 Example: 11 B1250 24 110 for contactor B1250, three poles, with 2NO+4NC auxiliary contacts and 110-125VAC 50/60Hz coil.
- ⑦ Maximum voltage is limited at 300V for UL. For certified type up to 600V, consult Customer Service for information; see contact details on inside front cover.
- ⑧ For voltages 024 / 230 / 400VAC 50-60Hz: 10 pieces/package.  
 For all other voltages: 1 piece/package.
- ⑨ Highly conductive auxiliary contact.
- ⑩ For use at this other current value, a 16mm<sup>2</sup> cable, headed with a fork terminal, must be used.
- ⑪ No UL/CSA ratings; data given for indication and reference purposes only.
- ⑫ Definite-purpose (DP) contactors are available. Consult Customer Service for information; see contact details on inside front cover.

### THREE AND FOUR-POLE BG MINI-CONTACTORS AND CONTROL RELAY WITH AC OR DC COIL

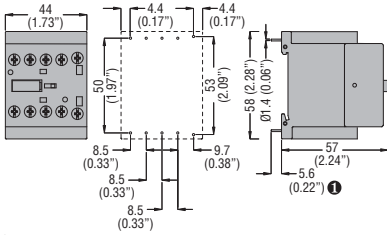
**BG...** mini-contactors or control relay



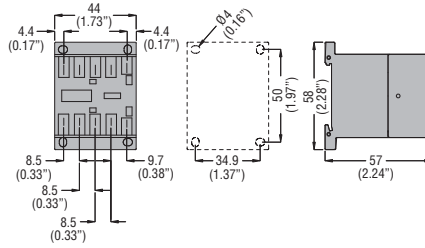
**BG...** mini-contactors with screw terminals and **RF...9** thermal relay



**BGP...**  
with rear PCB solder pins



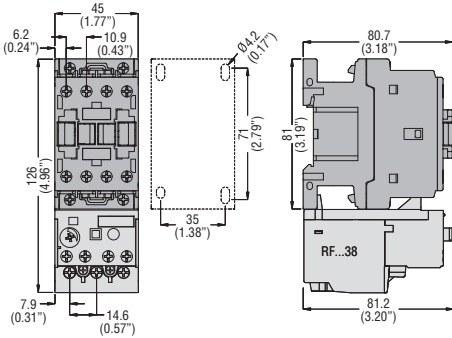
**BGF...**  
with Faston terminals



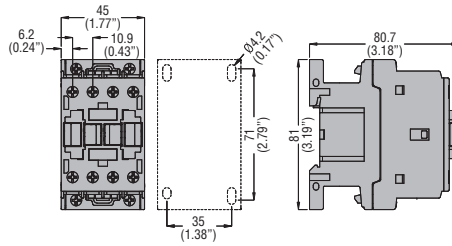
● Recommended PCB drillings 1.7-2mm.

### BF CONTACTORS WITH AC COIL

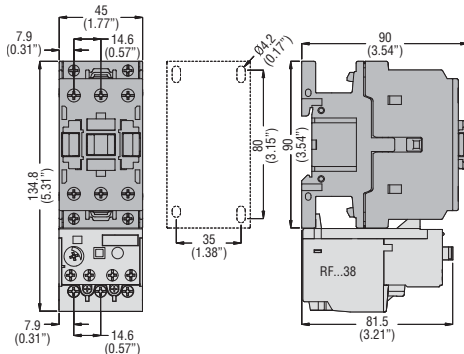
**BF09A - BF12A - BF18A - BF25A** three poles  
with **RF...38** thermal relay



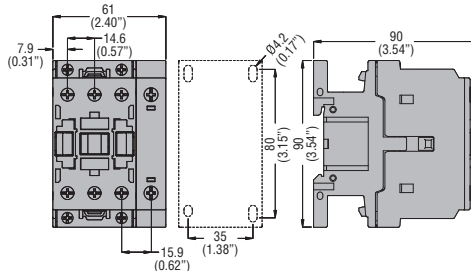
**BF00A...** control relay  
**BF09T...A - BF12T...A - BF18T...A** four poles



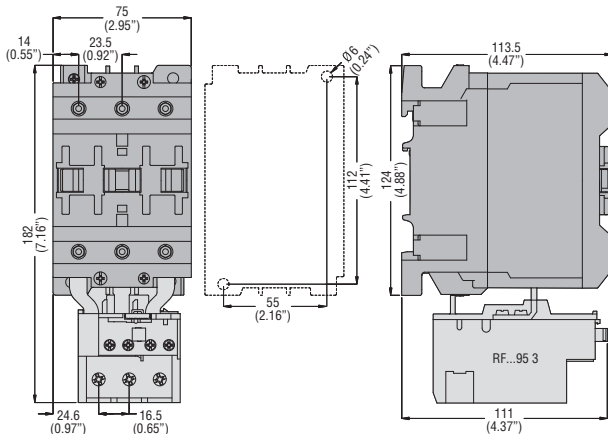
**BF26A - BF32A - BF38A** three poles  
with **RF...38** thermal relay



**BF26 T...A - BF38 T...A** four poles



**BF50 00 - BF65 00 - BF80 00 - BF95 00 - BF110 00** three poles  
with **RF...95 3** thermal relay



**BF50 40 - BF65 40 - BF80 40 - BDF80 40** four poles

