



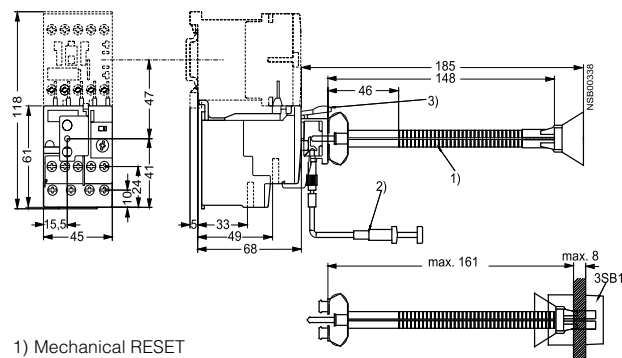
Dimension drawings

Screw connection

Lateral clearance to grounded components: at least 6 mm.

3RU11 16-..B0

Size S00 with accessories

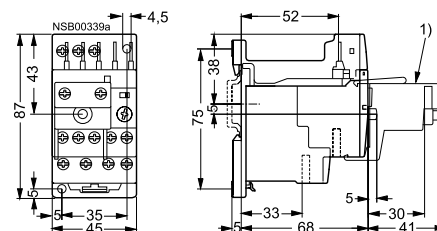


- 1) Mechanical RESET
- 2) Cable release (400 mm or 600 mm long, mounting on the front or laterally on the holder)
- 3) Holder for RESET

3RU11 16-..B.

Size S00

with adapter for installation as a single unit with accessories

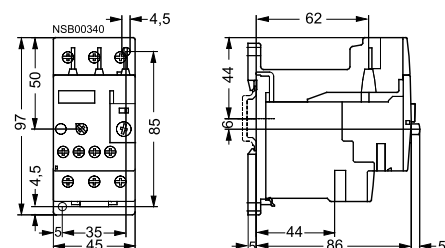


- 1) Module for remote RESET

3RU11 26-..B.

Size S0

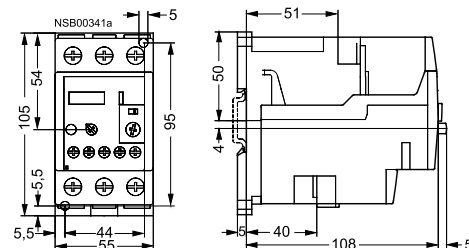
with adapter for installation as a single unit



3RU11 36-..B.

Size S2

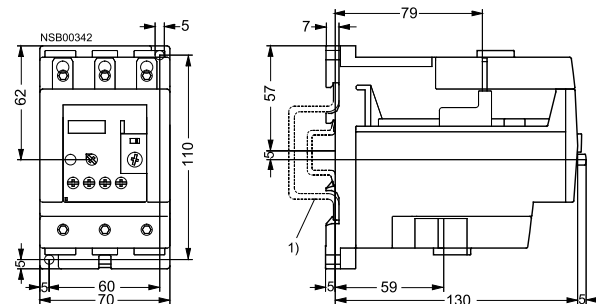
with adapter for installation as a single unit



3RU11 46-..B.

Size S3

with adapter for installation as a single unit



- 1) For mounting on 35 mm standard mounting rail (15 mm deep) acc. to EN 50 022 or 75 mm standard mounting rail acc. to EN 50023

Dimension drawings "Contactor with built-on overload relay" see contactors and contactor combinations.