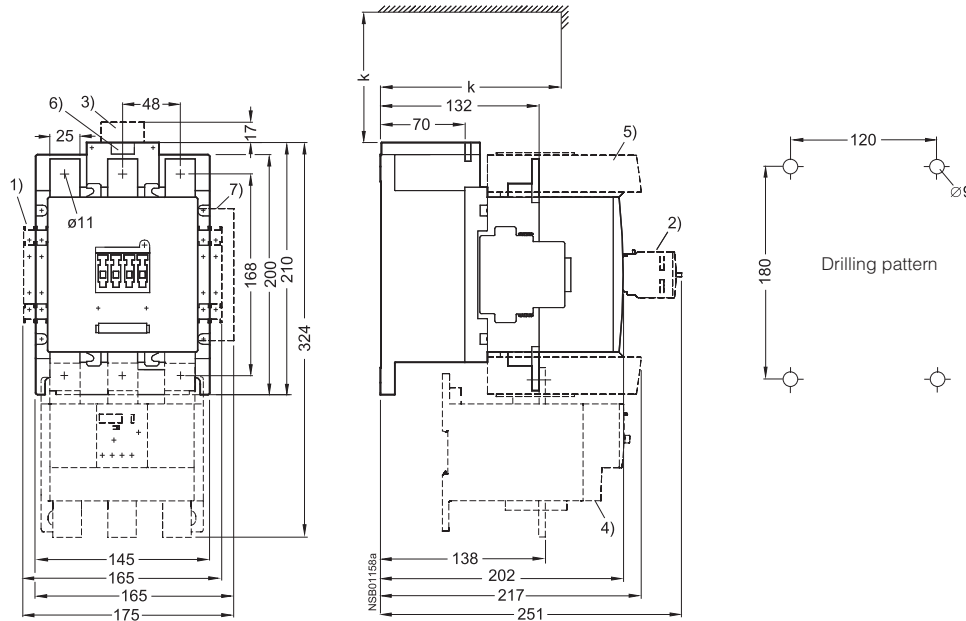




Dimension drawings

3RT10 6, 3RT14 6 contactors**Size S10**

with auxiliary switch block, laterally mountable and mountable on the front,
mounted overload relay and box terminals,
laterally mounted electronics module with remaining lifetime indication

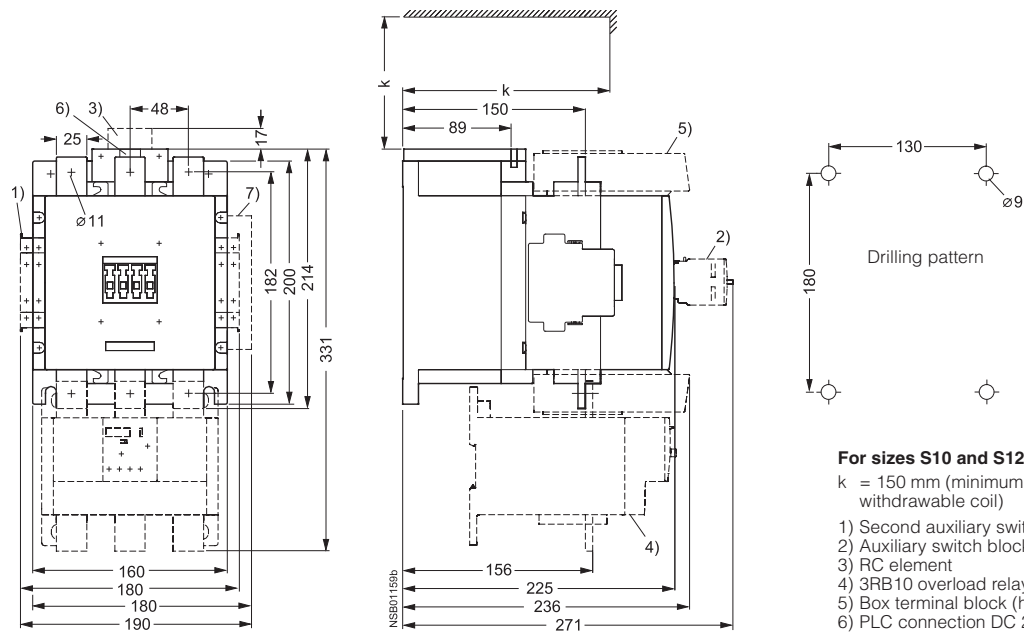
**3RT10 7, 3RT14 7 contactors****Size S12**

with auxiliary switch block, laterally mountable and mountable on the front,
mounted overload relay and box terminals,
laterally mounted electronics module with remaining lifetime indication

For sizes S10 and S12:

Clearance from earthed parts with directly mounted
overload relay:

lateral: 10 mm
front: 20 mm

**For sizes S10 and S12:**

k = 150 mm (minimum clearance for removing the
withdrawable coil)

- 1) Second auxiliary switch block, laterally mountable
- 2) Auxiliary switch block, mountable on the front
- 3) RC element
- 4) 3RB10 overload relay, mounted
- 5) Box terminal block (hexagon socket 6 mm)
- 6) PLC connection DC 24 V and changeover switch (with 3RT1...-N)
- 7) Electronics module with remaining lifetime indication (auxiliary switch block not mountable on right-hand side)