



## 3RT10 contactors, 3-pole

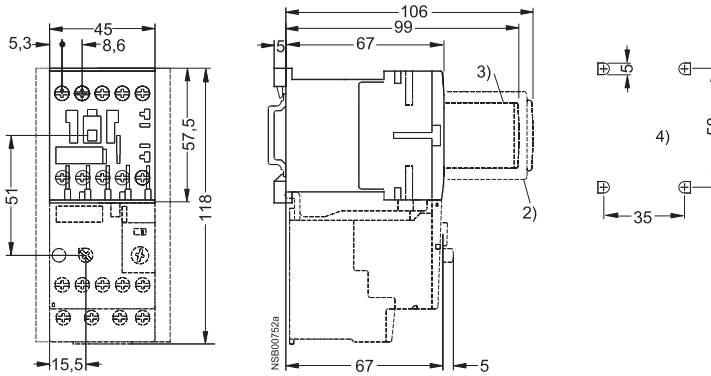
### Dimension drawings

#### 3RT10 1 contactors

Size S00 and NEMA Size 0, screw connection

with surge suppressor, auxiliary switch block and mounted overload relay

Lateral clearance from  
earthed parts = 6 mm

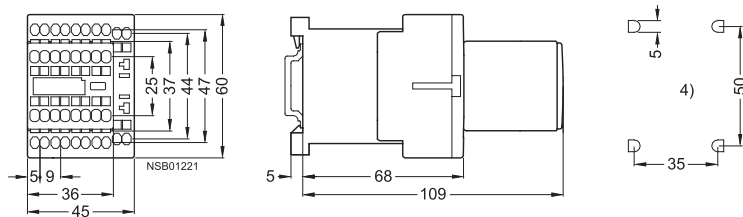


- 2) Auxiliary switch block  
(also 3RH19 11- . NF . . solid-state  
compatible design)
- 3) Surge suppressor  
(also 3RT19 16-1GA00 additional  
load module)
- 4) Drilling pattern

#### 3RT10 1 contactors

Size S00, Cage Clamp connection

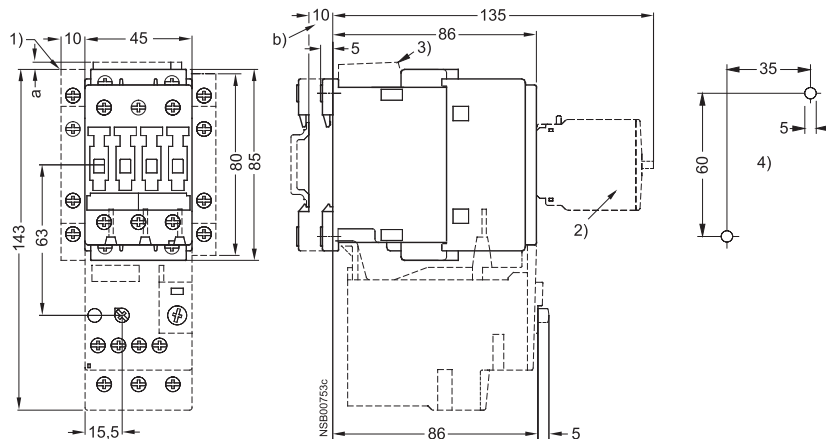
with auxiliary switch block



#### 3RT10 2 contactors, 3RT10 2 coupling relays

Size S0 and NEMA Size 1, screw connection

with surge suppressor, auxiliary switch blocks and mounted overload relay



#### For size S0:

- a = 3 mm at < 240 V
- a = 7 mm at > 240 V
- b = DC 10 mm deeper than AC

- 1) Auxiliary switch block, laterally mountable
- 2) Auxiliary switch block, mountable on the front,  
1, 2 and 4-pole (also 3RH19 21- . FE22  
solid-state compatible design)
- 3) Surge suppressor
- 4) Drilling pattern