

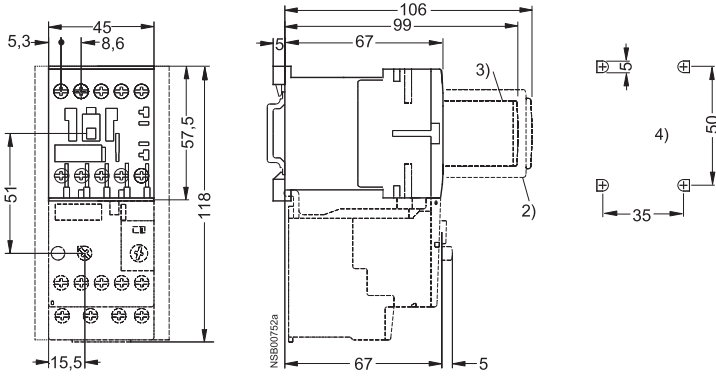


**3RT10 contactors,
3-pole**

Dimension drawings

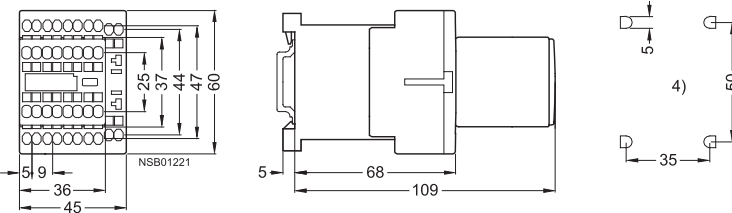
3RT10 1 contactors
Size S00 and NEMA Size 0, screw connection
 with surge suppressor, auxiliary switch block and mounted overload relay

Lateral clearance from
 earthed parts = 6 mm

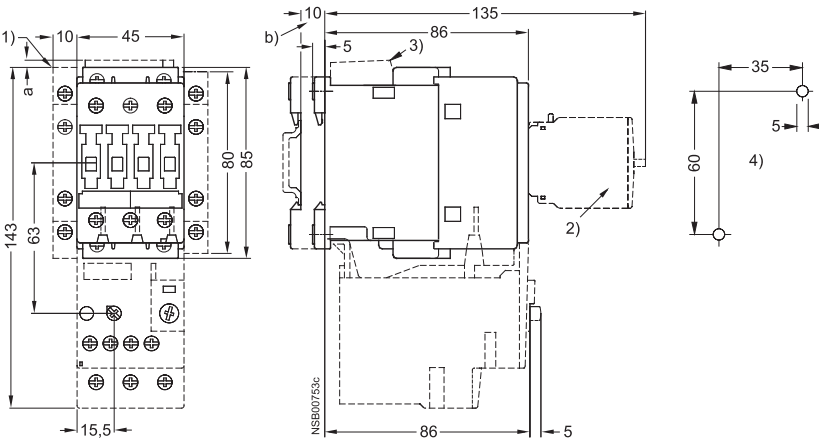


- 2) Auxiliary switch block
 (also 3RH19 11- . NF . . solid-state compatible design)
- 3) Surge suppressor
 (also 3RT19 16-1GA00 additional load module)
- 4) Drilling pattern

3RT10 1 contactors
Size S00, Cage Clamp connection
 with auxiliary switch block



3RT10 2 contactors, 3RT10 2 coupling relays
Size S0 and NEMA Size 1, screw connection
 with surge suppressor, auxiliary switch blocks and mounted overload relay



- For size S0:**
- a = 3 mm at < 240 V
 - a = 7 mm at > 240 V
 - b = DC 10 mm deeper than AC
- 1) Auxiliary switch block, laterally mountable
 - 2) Auxiliary switch block, mountable on the front,
 1, 2 and 4-pole (also 3RH19 21- . FE22 solid-state compatible design)
 - 3) Surge suppressor
 - 4) Drilling pattern